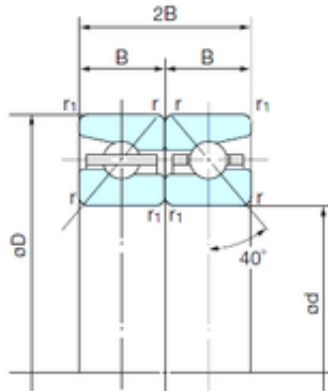




YYH Bearing & Drivetrain Co., Ltd.

75 mm x 115 mm x 18 mm NACHI
75TBH10DB double direction angular contact
thrust ball bearings



Bearing No. 75TBH10DB

Size	75x115x18 mm
Bore Diameter	75 mm
Outer Diameter	115 mm
Width	18 mm
d	75 mm
D	115 mm
B	18 mm
Angle (°)	40 °
r min.	1.1 mm
r1 min.	0.6 mm
2B	36 mm
Basic dynamic load rating (C)	42 kN
Basic static load rating (C0)	109 kN
(Grease) Lubrication Speed	5300 r/min

75TBH10DB Bearing 2D drawings and 3D CAD models